



SERVING PEOPLE ON THE MOVE

SmartData provides users a menu of translating problems into solutions. Using a suite of report generating tools, SmartData combines data warehousing and data mining technologies to create and define a new level of information management.

Now You Can:

- Manage large amounts of data
- Produce custom reports
- Import data from any source
- Organize, correct, and correlate data.

SmartData Can Be Used To:

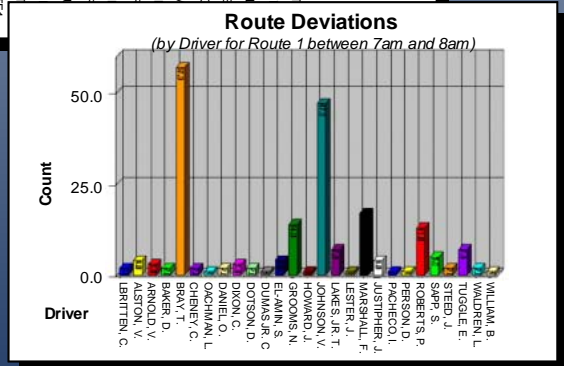
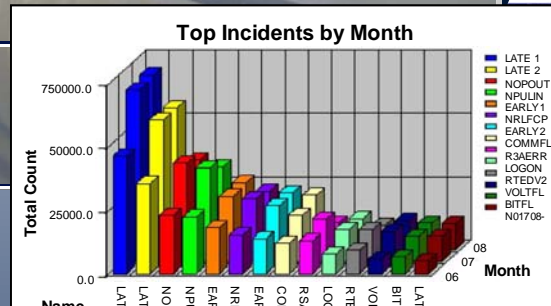
- Plan and schedule routes
- Resolve customer complaints
- Determine route schedule adherence (RSA)
- Correlate automated passenger counter (APC) and fare box data
- Provide data for numerous other "standard" and "ad hoc" reports/graphs.

Data Analysis Formats Include:

- Spreadsheets
- Charts/Graphs
- Export to ASCII file.

SMARTDATA

From Data to Information to Usable Knowledge



Visualizing data allows transit management and operations personnel to get answers to their questions of who, what, where, and how deviations occur!

Transportation Management Systems

7160 Riverwood Drive • Columbia, MD 21046
1-888-ORBTRAC www.orbitaltms.com